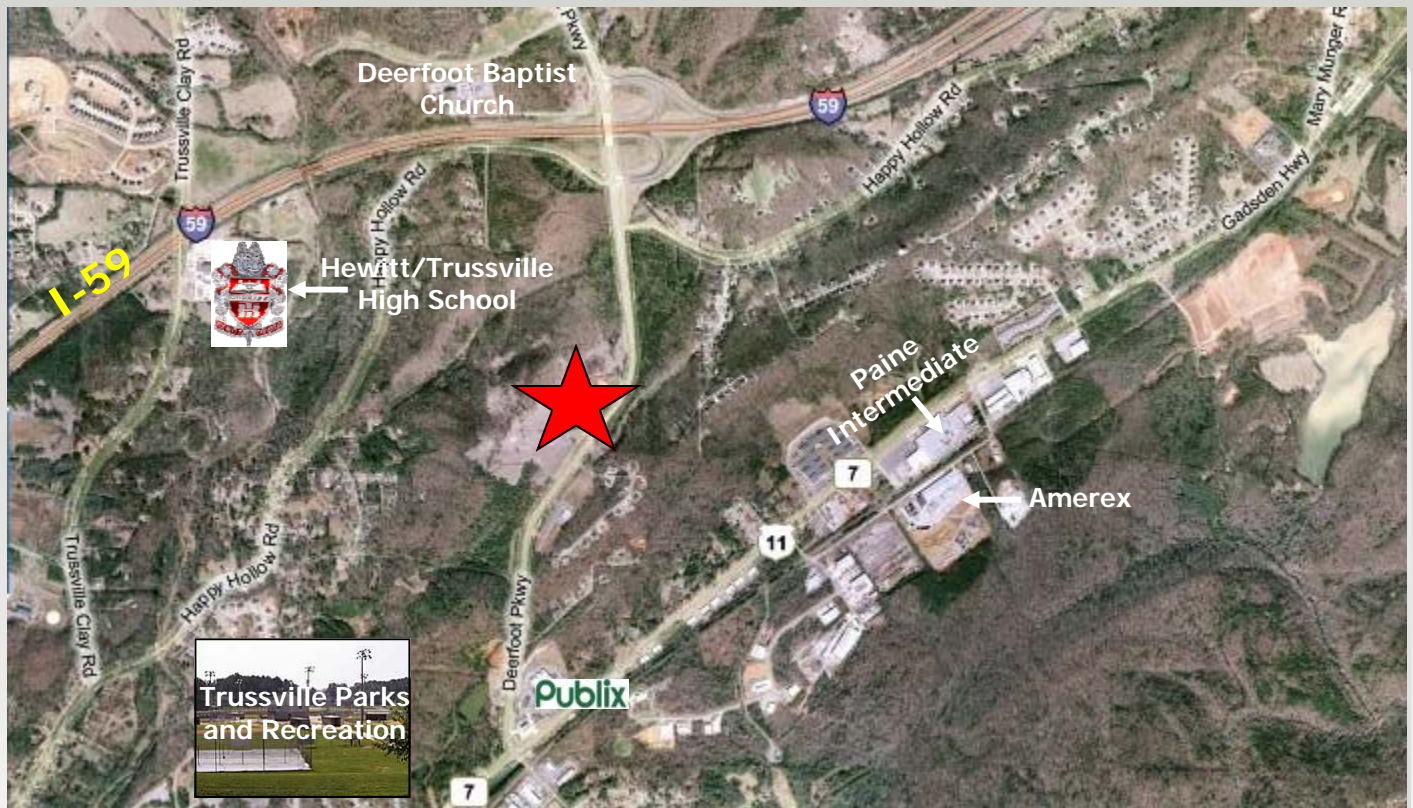


Commercial & Residential Land Trussville, AL

For Sale



Property Overview

- ▶ ±5 - ±10 acres of vacant land fronting Deerfoot Parkway; Ideal for commercial development
- ▶ ±59 acres of vacant land on the rear parcel; Ideal for residential development
- ▶ Located on Deerfoot Parkway with high visibility and easy access to I-59

<i>Demographics:</i>	<i>3-Mile</i>	<i>5-Mile</i>
Population:	13,148	43,602
Avg. H.H. Income:	\$82,307	\$73,480

Property Details

- ▶ **Location:** 5310 Deerfoot Parkway
Trussville, AL 35173
- ▶ **Zoning:** Front Parcel - Commercial
Rear Parcel - Agriculture
- ▶ **Traffic Count:** 39,820 CPD (I-59)
16,170 CPD (Hwy 11)
- ▶ **Utilities:** Sewer Available
- ▶ **Listing Price:** Front Parcel: ±10.0 Acres
\$85,000/Acre
Rear Parcel: ±59 Acres
\$14,000/Acre

Contact Information :

Sam Duffey
sduffey@eysterproperties.com
 Phone : (205) 871-1940



EYSTER PROPERTIES

www.cbcep.com

Post Office Box 531006, Birmingham, AL 35253

The information contained herein is from sources deemed reliable, however, Coldwell Banker Commercial Eyster Properties makes no warranties or representations to the accuracy thereof. ©2008 Coldwell Banker Corporation, Coldwell Banker® and Coldwell Banker Commercial® are registered trademarks of Coldwell Banker Corporation. An Equal Opportunity Company. Each Office is Independently Owned and Operated.

